

THE
CONSERVATION FUND

Migratory Bird Treaty Act – Compensatory Mitigation

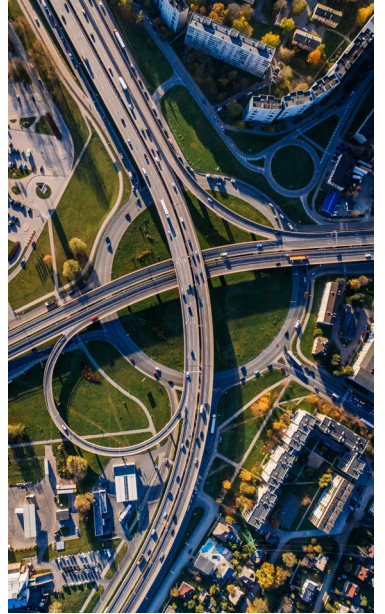
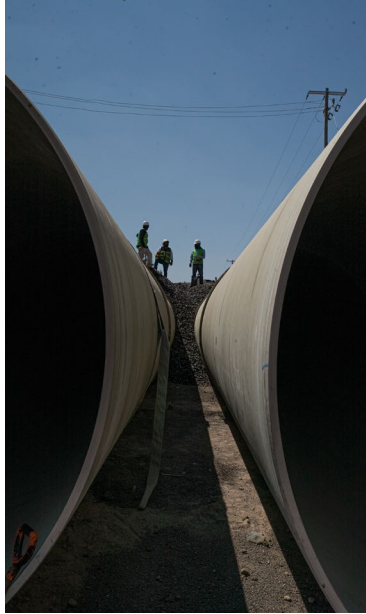
Nick Morgan

Director, Mitigation Solutions

July 13, 2022

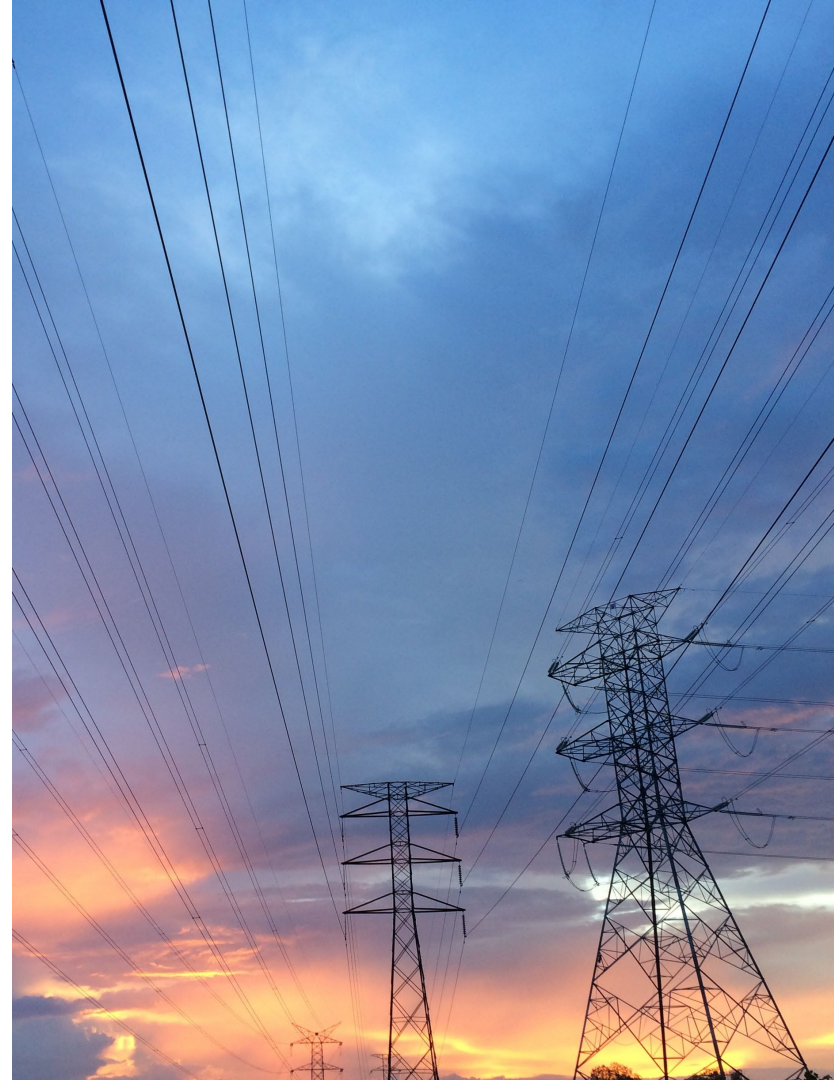


WHAT IS MITIGATION?



MITIGATION SOLUTIONS PROGRAM

- Infrastructure development underway throughout the U.S.
- Balance economic development with sound environmental practices
- Provide a net conservation benefit for unavoidable impacts



MITIGATION TYPES & OUR EXPERIENCES

- Permittee-responsible mitigation
- In-lieu fee programs
- Mitigation banking
- Non regulatory/
stewardship programs



PERFORMANCE DRIVEN

EFFICENCY | CREDIBILITY | RESULTS

America's Top-Rated Environmental Charity



96% of every \$1
goes directly to our programs

Acres Protected
8.5M

Valued at More Than
\$7.2B

Paying Less Than
\$5.5B

Saving Americans
\$1.7B

PERFORMANCE TO DATE

350 mitigation projects in 30+ states

- Endangered species
- Migratory birds
- State/Federal land impacts

Over 355,000+ acres protected
(\$277M in fair market value)

Attracted tens of millions of additional
funds for mitigation projects



MIGRATORY BIRD TREATY ACT

- TCF has completed 41k acres of migratory bird mitigation
- MBTA guidance change
- Now USFWS is working on a permitting process for MBTA



CASE STUDY: FLANAGAN SOUTH PIPELINE PROJECT

- Sponsor: Enbridge
- 593-mile pipeline project
- Approx. 2,700 acres migratory bird, Indiana bat, and American burying beetle habitat impacted
- \$21M mitigation account and approximately \$30M has been leveraged by the funds to date.
- To date 14,751 acres protected



CASE STUDY: FLANAGAN SOUTH PIPELINE PROJECT

Migratory Bird Mitigation Funding

Developed Mitigation Ratios Based On:

- 4 habitat types
- Temporary vs. Permanent Impacts

Mitigation Cost Based On:

- Property Fair Market Value
- Maintenance and Restoration



CAN WE MITIGATE FOR MANY SPECIES OF BIRDS?

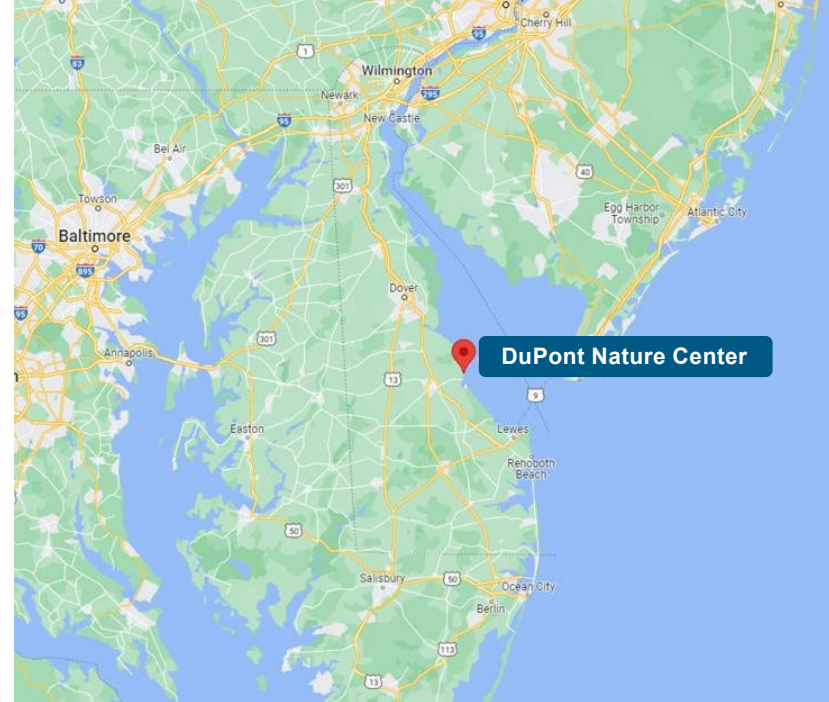
- Magnitude of impact
- Identify habitat types
- Landscape-scale mitigation



RED KNOT & SHOREBIRD CONSERVATION

CASE STUDY: Mispillion Harbor, DE

- 80% of entire red knot population recorded at Mispillion Harbor
- Critical stopover for 9,000 mile migration from South America to the Arctic breeding grounds
- TCF purchase of 73 acres and transferred to the State of Delaware
- Safeguard last two remaining privately held parcels for this critical stopover for shorebirds





CONTACT

Nick Morgan

Director, Mitigation Solutions

nmorgan@conservationfund.org